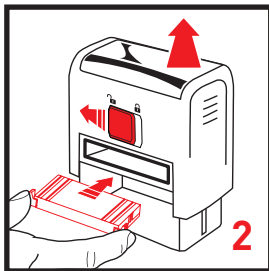
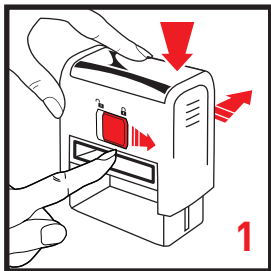


How to replace your ink pad



1. Press stamp downward and slide back locking button to lock the handle into place. Push old ink pad out using your index finger.
2. Holding the new ink pad by the grip tabs, slide it into the stamp with the foam side facing down until the tabs pop off. Slide the back locking button to the unlock position to release the stamp handle. Your stamp is now ready to use!